



NAVY Series

Unidirectional and bidirectional seal medium pressure gate valve

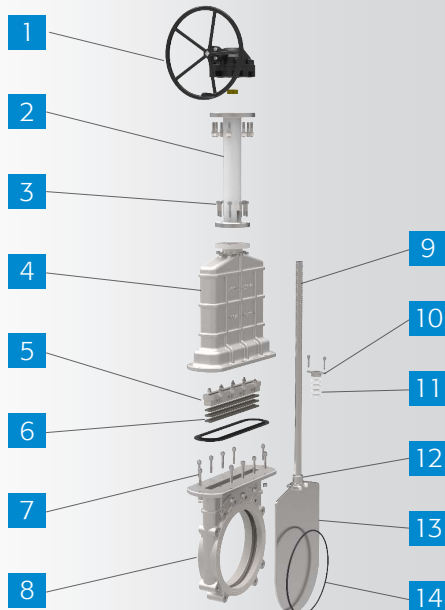
- Model:** NAVY
- Working Pressure:** DN50-DN2000/2"-80" 25bar
DN2200-DN3000/88"-120" 16bar
- Type:** Wafer, Lug, Flange
- Design Standard:** MSS SP-81
- Flange Standard:** DIN EN 1092 / ANSI B16.5 / others
- Face to Face:** MSS SP-81 / customer specification
- Testing Standard:** DIN EN 12266 / API-598
- Operation:** handwheel, electric, pneumatic, hydraulic, sprocket, electro-hydraulic, gear
- Body material:** F55, F53, CF3M, CF8M, CF8, WCB, GGG40, customer specification
- Wedge material:** SS310, CF3M, CF3, CF8M, CF8, WCB, GGG40, F55, F53, 2205, SS310, SS316L, SS316, SS304, customer specification
- Sealing material:** NBR, EPDM, FKM, PTFE, other materials upon request
- Packing:** PTFE, EPDM
- Application areas:** Applicable in power plants, pharmaceuticals industry, petrochemical industry, food industry, paper-and-pulp industry.
- Applicable medium:** Coal, slag discharge, sewage, water, oil, steam, grout, gold powder, ores, pulp, wood pulp, tailings, fibers, dust, chemicals, drain from sedimentation tanks, asphalt, bunker waste, fruit juices, cereals, slaughter plant waste and other media.

Features:

- Uni- or bi-directional seal
- Additional bonnet which provides a double protection
- The packing gland keeps medium residuals out of the bonnet

Product Description:

NAVY Series valves are double sealing middle pressure knife gate valves including a bonnet and a packing gland. The packing gland gathers the medium residuals left on the knife and prevents their movement upward. The fully closed bonnet effectively prevents a leakage and is equipped with a flushing point.



Code	Name	Material	QTY
1	Gear box	Q235	1
2	Yoke	Steel	1
3	Bolt & nut	Stainless steel	N
4	Bonnet	F55/F53/CF3M/CF8M/CF8/WCB/GGG40	1
5	Packing gland	F55/F53/CF3M/CF8M/CF8/WCB/GGG40	1
6	Packing	EPDM/NBR/FKM/PTFE	3-5
7	Bolt & nut	Stainless steel	N
8	Body	F55/F53/CF3M/CF8M/CF8/WCB/GGG40	1
9	Stem	Stainless steel	1
10	Packing gland	F55/F53/CF3M/CF8M/CF8/WCB/GGG40	1
11	Packing	PTFE	3-5
12	Chuck	SS201/SS304/SS316/2205	1
13	Disc	SS304/SS316/2205	1
14	Seat	EPDM/NBR/FKM	1

