

NU Series

Bi-directional seal Knife Gate Valve with open body and U-shaped seal



Features:

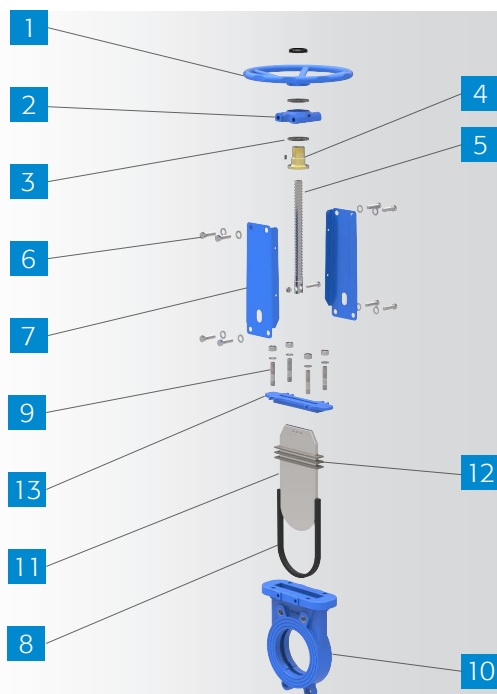
- Bi-directional seal
- 1PC body design
- Full port design
- Reduced media sediment accumulation in the valve body

Model: NU
Working Pressure: DN50-DN100/2"-4" 16bar
 DN125-DN200/5"-8" 10bar
 DN250-DN400/10"-16" 7bar
 DN600-DN700/24"-28" 3bar
 DN800-DN900/32"-36" 2bar
 DN1000-DN1200/40"-48" 1bar

Type: Wafer, Lug, Flange
Design Standard: MSS SP-81
Flange Standard: DIN EN 1092 / ANSI B16.5 / others
Face to Face: MSS SP-81 / customer specification
Testing Standard: DIN EN 12266 / API-598
Operation: handwheel, electric, pneumatic, hydraulic, sprocket, electro-hydraulic, gear
Body material: F55, F53, CF3M, CF8M, CF8, WCB, GGG40, customer specification
Wedge material: SS310, CF3M, CF3, CF8M, CF8 WCB, GGG40, F55, F53, 2205, SS316L, SS316, SS304, customer specification
Sealing material: NBR, EPDM, FKM, PTFE, other materials upon request
Packing: PTFE, EPDM
Application areas: Applicable in power plants, pharmaceuticals industry, petrochemical industry, food industry, paper-and-pulp industry.
Applicable media: Coal, slag discharge, sewage, water, oil, steam, grout, gold powder, ores, pulp, wood pulp, tailings, fibers, dust, chemicals, drain from sedimentation tanks, asphalt, bunker waste, fruit juices, cereals, slaughter plant waste and other media.

Product Description:

NU Series bi-directional seal knife gate valve with a cast iron body has a standardized knife gate valve structure, including the valve body, the gate, and the U-shaped flexible seal at the bottom of the body. When the valve is closed, the bottom edge of the gate compresses the seal into the groove of the body. When the gate opens, the seal will bounce back to same level as the groove, which will prevent media sediment from accumulation in the body groove. The advantages are: no clogging, no residue, the pipe is easy to clean; in such a way, the sealing effect of the knife gate valve is effectively improved.



Code	Name	Material	QTY
1	Hand wheel	Steel	1
2	Yoke Cap	Steel	1
3	Bearing	GCr15	2
4	Stem Nut	Brass	1
5	Stem	Stainless steel	1
6	Bolt & Nut	Stainless steel	N
7	Yoke	Steel	2
8	Seat	EPDM/NBR/FKM/PTFE	1
9	Bolt & Nut	Stainless steel	N
10	Body	F55/F53/CF3M/CF8M/CF8/WCB/GGG40	1
11	Disc	F55/F53/SS304/SS316/2205	1
12	Packing	PTFE/EPDM	3-5
13	Packing Gland	CF8M/CF8/WCB/GGG40	1

